

TPC35 Display and operator panel

Application

The TPC35 is a remote display and operator panel for BMR410 and DDC420. It has an active matrix color LCD touchscreen with a screen size of 3,5" / 8,9 cm.

For direct communication with one or several BMRs or DDC420s, the TPC35 has a built-in Ethernet interface.

The TPC35 is suitable for installation in the front panel.

With the TPC35, up to 3 BMRs or DDC420s can be operated.

The user interface is available in 12 languages. (Czech, Dutch, English, French, German, Hungarian, Italian, Latvian, Polish, Russian, Spanish and Swedish)



Content	Page
Important Information Regarding Product Safety	2
Item	3
Technical Data	3
Accessories (included in delivery)	3
Accessories (not included in delivery)	3
Dimensions	4
Front Panel Cutout.....	4
Connection.....	5
Power Supply.....	5
Mounting	6
Removal.....	6
Installation.....	7
Updating the Software	8

Änderungen vorbehalten - Contents subject to change - Sous réserve de modifications - Reservado el derecho a modificación - Wijzigingen voorbehouden - Con riserva di modifiche - Innehåll som skall ändras - Změny vyhrazeny - Zmiany zastrzeżone - Возможны изменения - A változtatások jogát fenntartjuk - 保留未经通知而改动的权力

Important Information Regarding Product Safety

Safety Instructions

This data sheet contains information on installing and commissioning the product "TPC35". Each person who carries out work on this product must have read and understood this data sheet. If you have any questions that are not resolved by this data sheet, you can obtain further information from the supplier or manufacturer.

If the product is not used in accordance with this data sheet, the protection provided will be impaired.

Applicable regulations must be observed when installing and using the device. Within the EU, these include regulations regarding occupational safety and accident prevention as well as those from the VDE (Association for Electrical, Electronic & Information Technologies). If the device is used in other countries, it is the responsibility of the system installer or operator to comply with local regulations.

Mounting, installation and commissioning work on the devices may only be carried out by qualified technicians. Qualified technicians are persons who are familiar with the described product and who can assess given tasks and recognize possible dangers due to technical training, knowledge and experience as well as knowledge of the appropriate regulations.

Legend



WARNING

Indicates a hazard of medium risk which can result in death or severe bodily injury if it is not avoided.



CAUTION

Indicates a hazard of low risk which can result in minor or medium bodily injury if it is not avoided.



CAUTION

Indicates a hazard of medium risk which can result in material damage or malfunctions if it is not avoided.



NOTE

Indicates additional information that can simplify the work with the product for you.

Notes on Disposal

For disposal, the product is considered waste from electrical and electronic equipment (electronic waste) and must not be disposed of as household waste. Special treatment for specific components may be legally binding or ecologically sensible. The local and currently applicable legislation must be observed.

Product Description**TPC35****Item**

TPC35 Remote display and operator panel for the BMR410
Basic unit: TPC-31T

Technical Data

Nominal voltage	DC 24 V \pm 20 %, 8 W
Fuse	Mains fuse permanently installed
Indicators and controls	Backlit active matrix LCD <ul style="list-style-type: none"> ■ Screen size: 3,5" / 8,9 cm ■ Resolution: 320 x 240 pixels ■ 64,000 colors ■ Contrast 300:1 ■ Brightness: 200 cd/m² ■ Operating life of backlighting: 30,000 h
Interfaces	Ethernet 10/100 Base-T (RJ45) USB1.1 host (with supplied adapter cable with Type A socket) for SW updates only RS232 (not used) RS485 (not used)
Housing	ABS, dark gray
Overvoltage category	III
Rated impulse voltage	800 V
Level of contamination	2
Automatic action	Type 1
Degree of protection	IP65 (when installed)
Ambient temperature	0 to 50°C
Ambient humidity	During operation: 10 % to 95 % r.h.; non-condensing
Installation	Front panel
Certifications	CE, BSMI, CCC, FCC, UL
Weight	0.25 kg
Dimensions (WxHxD in mm)	120.8 x 85.5 x 26.5

Accessories (included in delivery)

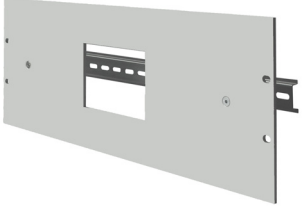
Fastening plate
4 short screws
4 long screws
USB adapter cable (micro-AB plug to type A socket)

Accessories (not included in delivery)

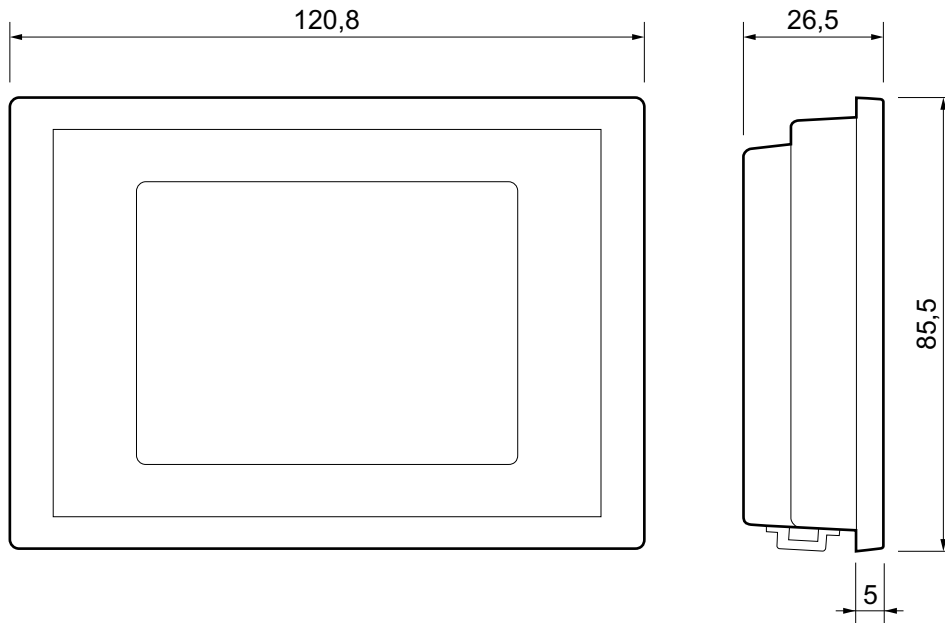
HW-103460 AC adapter

TPC35

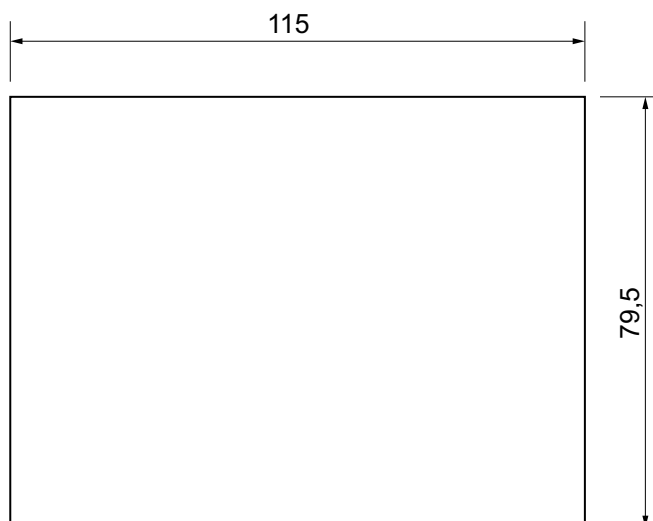
Product Description

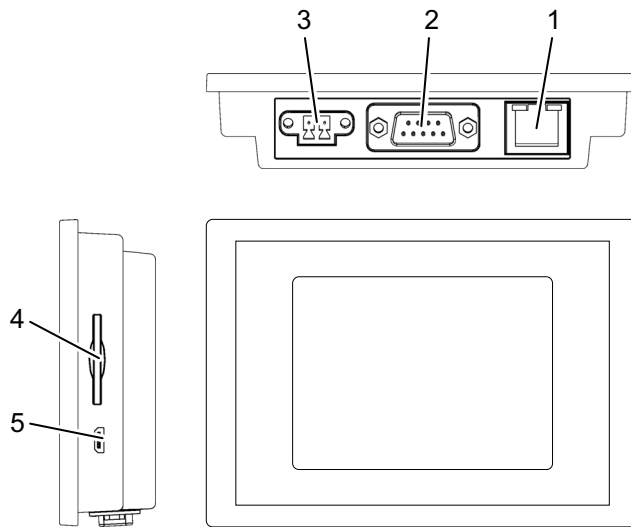
<p>Z62</p>	<p>Adapter frame for TPC35</p> <ul style="list-style-type: none"> ■ Format: 19" ■ Front cutout: fits TPC35 ■ Standard rail reverse side: One row, 414 mm wide (23 HP), 1 BMR410 / DDC420, 3 FBUs and 3 HP free, for example ■ Z62 with BMR410 / DDC420 and TPC35 can be used as a replacement for MRP with SP in a KA frame. 	
------------	--	---

Dimensions



Front Panel Cutout



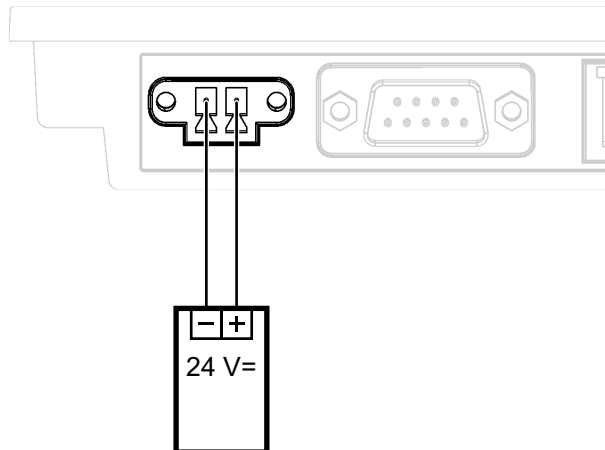
Product Description**TPC35****Connection**

- 1 Ethernet
- 2 Serial interface (not used)
- 3 Power supply
- 4 SD
- 5 USB host

Power Supply**CAUTION**

Danger of damaging the device

Ensure that it is correctly connected to the power supply.



Mounting



CAUTION

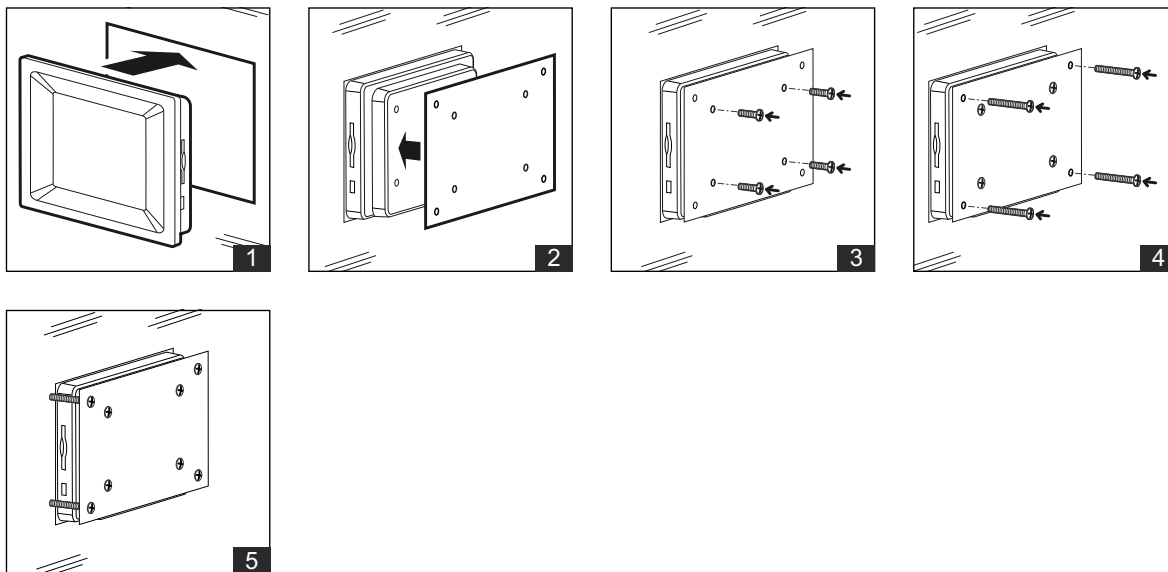
Mounting/demounting may only be carried out by qualified technicians when the power is switched off.

Front panel installation



NOTE

The thickness of the front panel must be less than 3.5 mm.



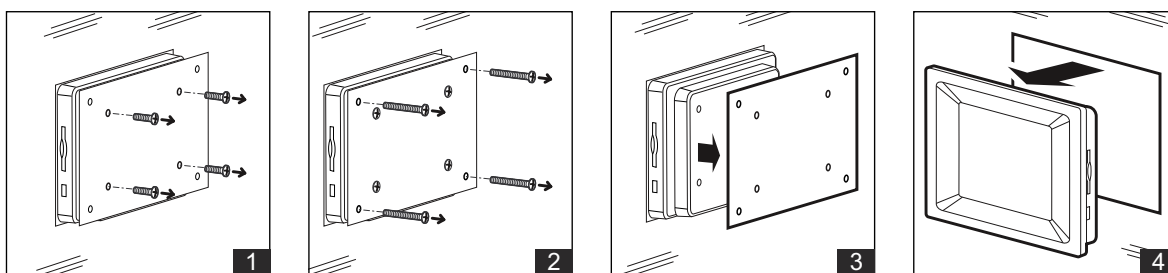
Removal



CAUTION

Mounting/demounting may only be carried out by qualified technicians when the power is switched off.

Front panel installation

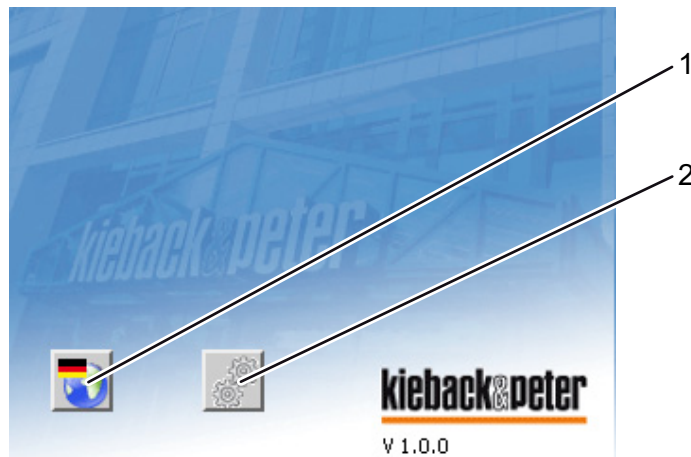


Installation

Starting the TPC35

- ▶ Connect the power supply to the device.

After the operating system starts, the configuration screen appears for 10 seconds:



- 1 Language selection
- 2 Settings



NOTE

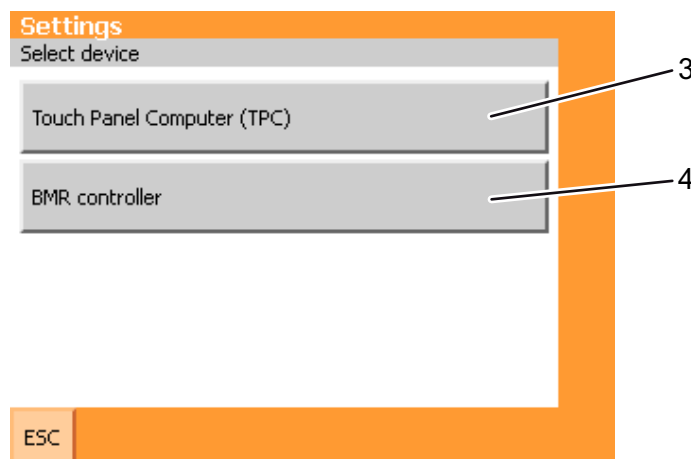
The TPC35 is delivered with a BMR410 or DDC420, both of which are configured with the standard settings. If the BMR410 or DDC420 do not communicate automatically with the TPC35, follow the instructions under “Configuring a connected BMR410 or DDC420 controller” on page 8.

Select language

- ▶ Tap the icon “Language selection” (1).
- ▶ Select the desired language.

Configuring the TPC35

- ▶ Tap the icon “Settings” (2).



- ▶ Tap “Touch Panel Computer (TPC)” (3).
- ▶ Configure the properties displayed.

Configuring a connected BMR410 or DDC420 controller

- ▶ Tap the icon "Settings" (2).
- ▶ Tap "BMR controller" (4).
- ▶ Configure the properties displayed.

Updating the Software

Kieback&Peter employees can find the current software for the TPC35 on the intranet.

- ▶ Decompress the ZIP file to the root of a USB flash drive.
- ▶ Ensure that the file was decompressed correctly: The file "TPCUpdate.exe" must be located in the root directory of the USB flash drive.
- ▶ Start the TPC35.
- ▶ Wait until the configuration screen disappears.
- ▶ Connect the USB flash drive to the TPC35. (See chapter "Connection", page 5.)
- ▶ Wait until "Start" is displayed on the TPC35.
- ▶ Tap "Start", then "Programs" and then the "Windows Explorer" icon.
- ▶ In Windows Explorer, tap "USB Hard Disk".
- ▶ Double-tap "TPCUpdate.exe" in Windows Explorer.
- ▶ In the update program, tap "Konfigurieren" (Configure).
- ▶ Wait until the update program displays "System Restart".
- ▶ Disconnect the USB flash drive from the TPC35. (See chapter "Connection", page 5.)
- ▶ In the update program, tap "System Restart".